



**Illumination  
Technologies, Inc.**



# *Ringlights*

Description	P/N	Features
<b><i>Adjustable Ringlight</i></b>	9010	8 Rotating Points of Light 0 to 90 Degree Rotation Bright Field/Dark Field Patented Design
<b><i>Annular Ringlights</i></b>	9021	Full Annular Ring 360 Degree Illumination Shadow Free Structure 60mm Clear Aperture
	9023	38mm Clear Aperture
	9025	30mm Clear Aperture
<b><i>Triple Ringlights</i></b>	9021-TPL	Triple Fiberoptic Feed Color Balance Applications Increase Intensity by Factor of 3 Increases Lamp Lifetime by 50 60mm Clear Aperture
	9025-TPL	Similar to 9021-TPL 25mm Clear Aperture
<b><i>Micro Ringlights</i></b>	9070	16 point Ringlights for 1/2" CCD Low Profile for Micro Cameras Powered by 150W Lightsource 3m Fiberoptic Cable Length
	9071	Similar to 9070 with Ringbody for 1/3" CCD Micro Cameras
	9072	Similar to 9070 with Ringbody for 1/4" CCD Micro Cameras
	907X-1	5m Fiberoptic Cable Length
	907X-2	7m Fiberoptic Cable Length
	907X-3	10m Fiberoptic Cable Length
	907X-4	20m Fiberoptic Cable Length
	907X-5	30m Fiberoptic Cable Length
	9086	16 point Ringlights for 1/2" CCD Powered by 5W Halogen Lamp Lamp: 5W, 5V, 2800K, 5000 hrs
	9087	Similar to 9086 with Ringbody for 1/3" CCD Micro Cameras
	9088	Similar to 9086 with Ringbody for 1/4" CCD Micro Cameras
	9090	Spare 5W Lamp Assembly for the 908X Series Micro Ringlights
	9096	Regulated DC Supply for 908X 100-240VAC with IEC connector

## **Illumination Technologies, Inc.**

5 Adler Drive, East Syracuse, NY 13057 USA

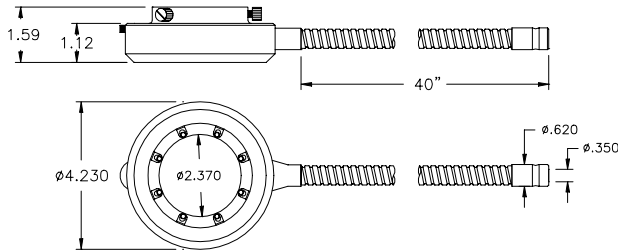
TEL: 315-463-4673 FAX: 315-463-1401

E-mail: [info@illuminationtech.com](mailto:info@illuminationtech.com)

<http://www.illuminationtech.com>



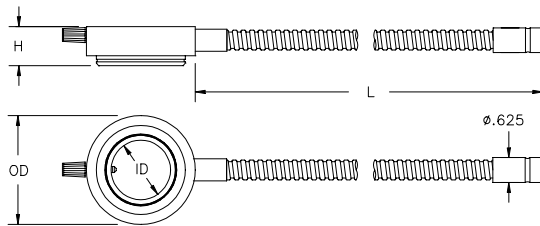
Illumination Technologies provides top quality fiberoptic ringlights. Stainless steel sheath and ferrules are swaged to ensure rugged reliability. Superior output uniformity provides unrivaled machine vision performance.



### Adjustable Ringlight

P/N 9010

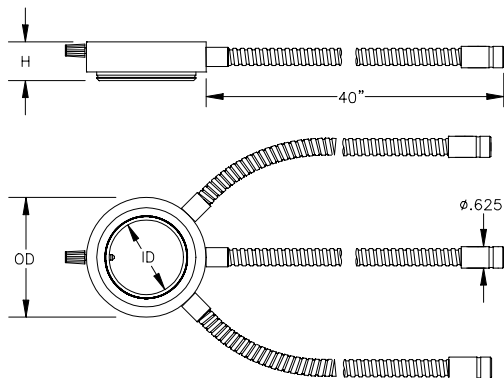
Patented design rotates 8 points of light from 0 to 90 degrees providing lighting structures from brightfield to darkfield with a simple rotation of the thumbwheel. Zero to 12" working distance.



### Annular Ringlights

Full annular rings deliver shadow free illumination. Three standard sizes. Fixed working distances. Snap on Polarizer/Analyzer, Reflector and Darkfield attachments (see Accessories).

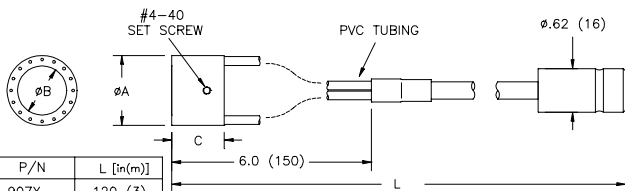
	ID	OD	H	L	WD
P/N 9021	2.36	3.50	1.13	40	4
P/N 9023	1.50	2.50	1.00	40	3
P/N 9025	1.18	2.00	0.95	36	2



### Triple Ringlights

Full annular rings with 3 fiber optic inputs. Two standard sizes. Used in RGB color balance applications (Patent Pending). Improves intensity and increases life (up to 50 times) in white light applications. Snap on Polarizer/Analyzer, Reflector and Darkfield attachments (see Accessories).

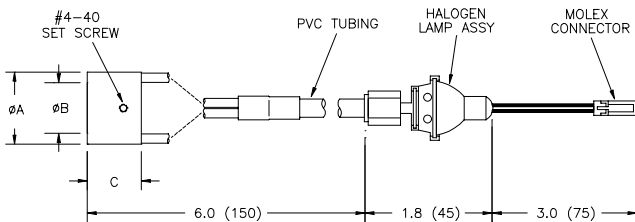
	ID	OD	H	WD
P/N 9021-TPL	2.36	3.75	1.13	4
P/N 9025-TPL	1.00	2.37	0.95	2



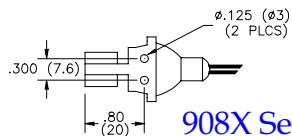
P/N	L [in(m)]
907X	120 (3)
907X-1	200 (5)
907X-2	300 (7.5)
907X-3	400 (10)
907X-4	800 (20)
907X-5	1200 (30)

P/N	A	B	C
9070-X	1.00(25)	.70(17)	.75(19)
9071-X	.80(20)	.50(12)	.75(19)
9072-X	.60(15)	.30(7)	.63(16)

907X Series



P/N	A	B	C
9086	1.00(25)	.70(17)	.75(19)
9087	.80(20)	.50(12)	.75(19)
9088	.60(15)	.30(7)	.63(16)



908X Series

DET. LAMP MOUNT HOLES

Low profile, low mass, 16 pt ringlights for the complete line of micro cameras. Two standard designs types. The 907X series is available in various lengths and are powered by our standard 150W lightsources (must use 9546 filter). The 908X series come complete with an integral 5V, 5watt Tungsten Halogen lamp for use in robotic applications. Integral lamp has a 5000 hour life-time. Spare lamps and an International DC Regulated supply available (see Accessories).